

City Parks



Peggy Clark 47-21

Where is Buck Run?



Betty Walker 48-14

HERE IS
BUCK RUN.

SEE
BUCK RUN.

Rain Forest in Gunn Park



Chuck Elliott 58-29



Peggy Clark 47-26



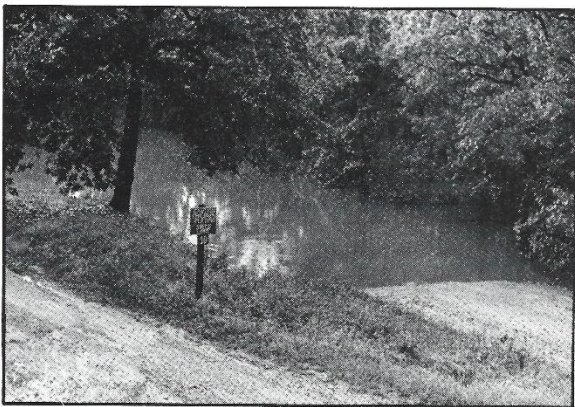
Chuck Elliott 58-44



Chuck Elliott 58-32



Gary Erie 64-39



Peggy Clark 47-25

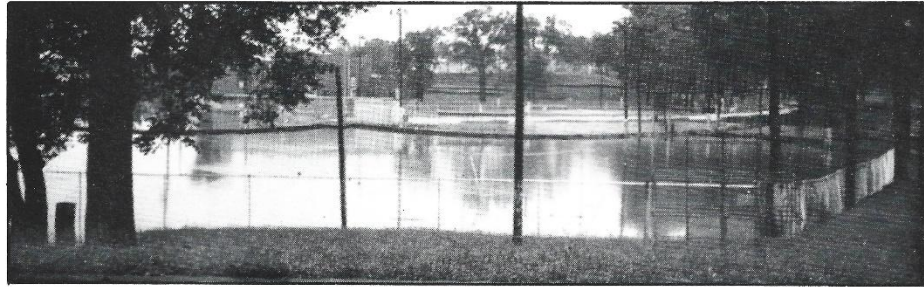


Gary Erie 64-41

Harry W. Fisher Park



Jahn Freed 54-26-2



Clete Hall 06-1



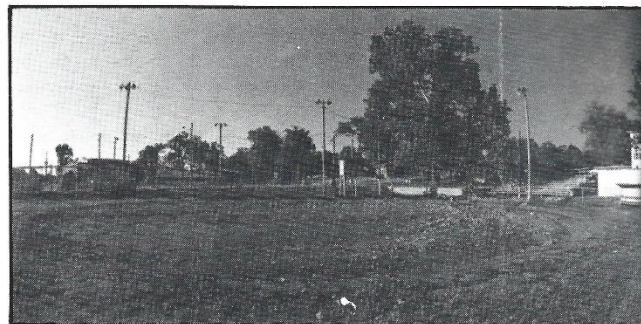
JaAnn Gaans 27-12



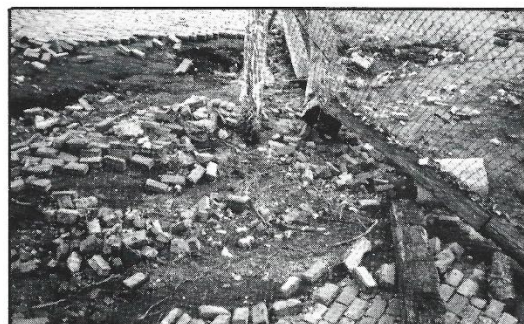
Melissa Albers 03-25



Clarence Nation 38-5-15



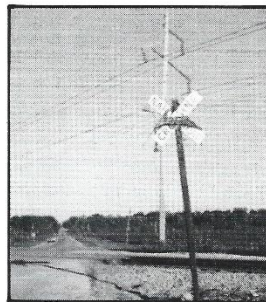
Jahn Freed 54-19-7



Chuck Elliott 58-34



Chuck Elliott 58-41



Donna VanHorten 7-3



Shelly Snyder 16-4

West 2nd Street

The Eating Sign

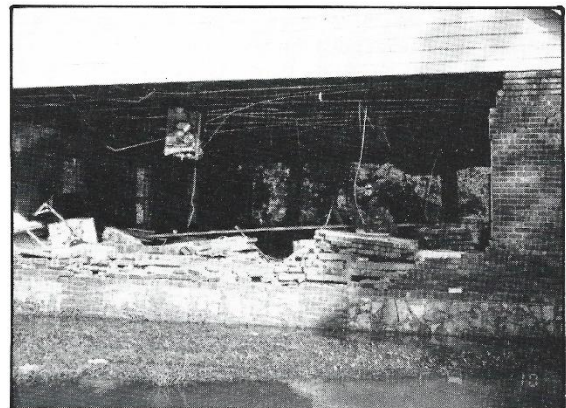
Brandi Dunn

A sign is eating on some hay after the flood washed some hay up onto it.

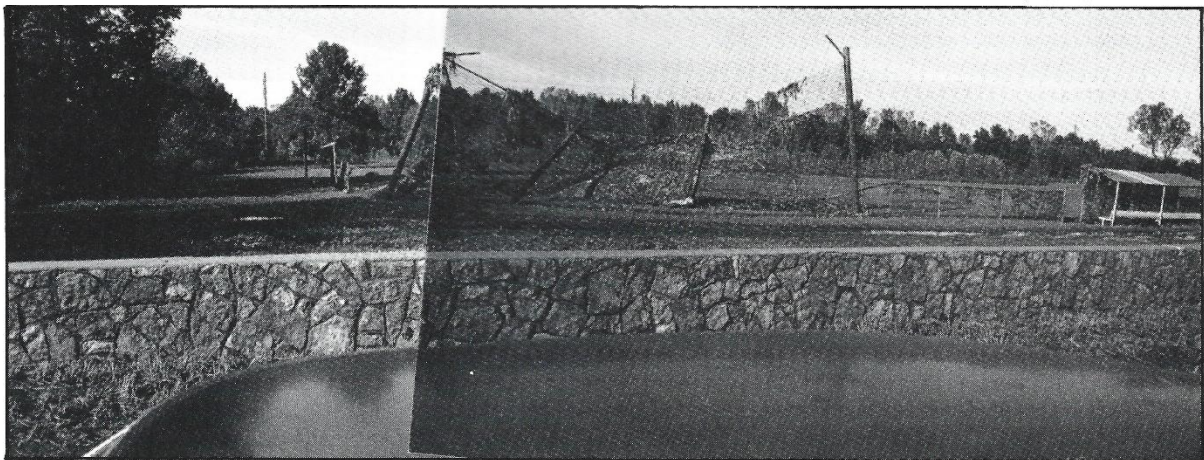
“Feed me!” sighed the sign



Donna VanHorten 7-2



Chuck Elliott 58-47



Chuck Elliott 58-38

North National Miscellaneous



Tom Hill wonders . . . Dick Carringer 75-1



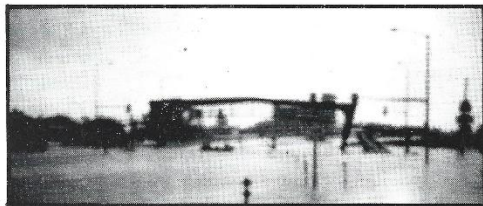
. . . and ponders Jim Feagins 25-4



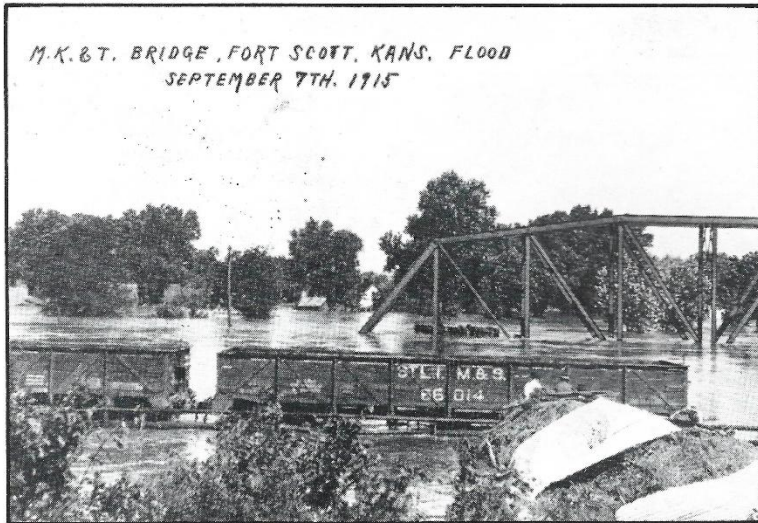
Lucille Gaddna 5-1



Betty Hixon George Hudiburg 43-12



Boat Rescue Bill Metcalf 35-2



Cows on the bridge Wayne Harlow 68-1
7 E



A train's nest John Bartlesmeyer 29-21